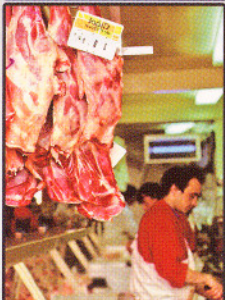


# SR-2000a

PRICE COMPUTING SCALE  
with PRINTER and TOUCHSCREEN



 **ISHIDA**  
**RICE LAKE**<sup>™</sup>  
RETAIL SOLUTIONS

[www.ricelakeretail.com](http://www.ricelakeretail.com)

# SR-2000a



## Customizable for Your Retail Environment

The SR-2000a from Ishida and Rice Lake is completely customizable for any retail environment. User selectable visuals and simple programming take the guess-work out of operation and increase productivity. The scrolling or flashing customer display can be changed daily for special offers or new product announcements.

**Intuitive user interface gives operators confident operation.** The 8.4" touchscreen provides easy access to PLU items, reducing operator training time and selection errors. Customize the photo-ready touchscreen to duplicate your case planogram—perfect for the changing needs of delis, bakeries, seafood, or meat markets.

**Drill down menu feature provides virtually unlimited PLU storage.** Once the operator selects a product category, they can drill down further to select specific items, allowing room for additional pre-programmed keys.

**Seamless communication ensures consistent and accurate pricing.** Featuring RF or Ethernet connectivity, the SR-2000a also communicates with third party centralized data management systems for stores with multiple equipment brands.

**Front-loading label cassettes and printing speed increases customer throughput.** Interchangeable label cassettes allow operators to keep pre-threaded cassettes ready for quick reload.



Large customer display flashes or scrolls any message. Change 3/4" characters daily for customized marquee advertising.

## Standard Features

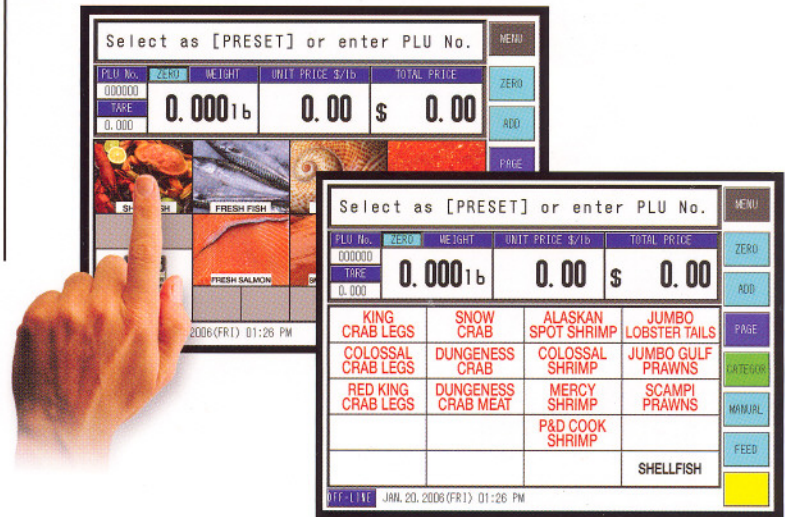
- 8.4" color touchscreen
- Front-load label cassette
- Ethernet communication
- 3/4" characters on customer display
- Assign images to category, presets, or function keys
- Up to 99 pages of speed keys
- Adjustable touchscreen viewing angle
- 3" thermal head
- 18 tactile keys
- 18 MB of memory
- 30+ selectable fixed bar code formats (RSS-14 capable)

## Options/Accessories

- Additional label cassettes
- Clear in-use cover
- Fish platter
- Produce platter
- Symbol RF radio card 802.11b
- ScaleLink Pro product management software

## Specifications

<b>Capacity:</b>	0-15 lb x 0.005 lb/15-30 lb x 0.01 lb
<b>Print head:</b>	Direct thermal (3" head)
<b>Print speed:</b>	4" per second
<b>Media width:</b>	3.15"
<b>Interface:</b>	Ethernet, two PCMCIA slots
<b>Dimensions:</b>	Scale: 17.7" W x 15.9" D x 6.5" H Platter: 16.5" W x 10.2" D
<b>Weight:</b>	32 lb



By simply touching the product category, a drill down list will be displayed—in this example, shellfish.



Your Rice Lake Weighing Systems distributor is:



230 W. Coleman St. • Rice Lake, WI 54868 • USA  
TEL: 715-234-9171 • FAX: 715-234-6967 • [www.ricelakeretail.com](http://www.ricelakeretail.com)  
© 2006 Specifications subject to change without notice PN88458 6/06