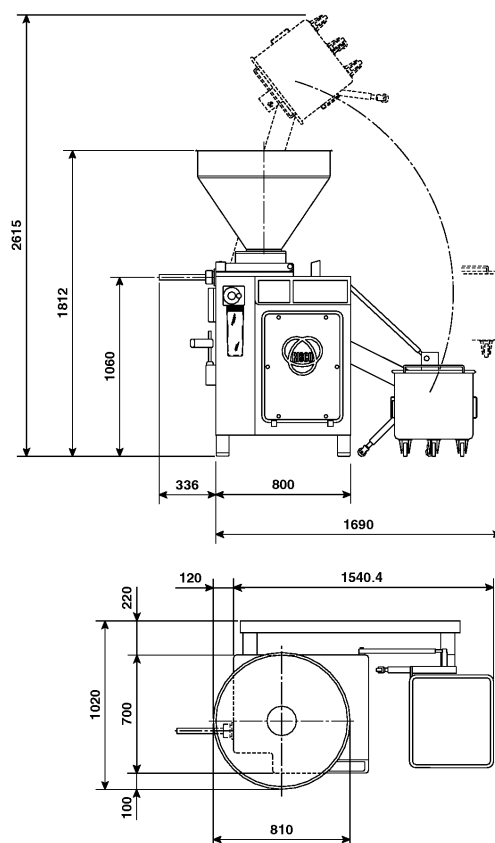


TECHNICAL FEATURES

Production per hour	kg/h	2800
Weight of portions	g	5 ÷ 30000
Hopper capacity	l	165
Maximum loading capacity	kg	150 [#]
Main motor	kW	3
Vacuum pump motor	kW	0,37
Total power installed	kW	3,6
Weight of the machine	kg	610
Cart capacity	l	100
Pneumatic feeding	bar	6
Dimensions	mm	See figure



[#] Maximum weight including the cart

